

## Instructions

- ★ Search for Fuseami and download from the Apple or Google App stores.
- ★ Login to app with your existing LinkedIn account.
- ★ To limit your networking to the Net Futures event:
  - ★ On main menu choose Events, select Net Futures and click attending.
  - ★ On the Find Connections screen, use the filter on top right to choose Event.
  - ★ You can now start networking with other Net Futures attendees.
- ★ To make a connection, simply click on the connect button. Once connected, use Chats to message your new connection.
- ★ Add keywords to the filter, to search for attendees with specific skills.



## Fuseami Background

The Fuseami concept arose from extensive EU research and the relevance engine that powers Fuseami is custom built.

If you are an organiser and would like to use Fuseami at your event, then please visit [fuseami.com](http://fuseami.com) to arrange a demo.

## Benefits

Use the Fuseami networking app at Net Futures for the following reasons:

**Automatic Discovery** - fuseami will automatically discover and recommend the most relevant attendees for you to connect with.

**Relevance** - what makes it special is its custom relevance engine. This intelligently searches for areas of relevance across attendee profiles.

**In Common** - will show you what you have most in common with the recommended connections.

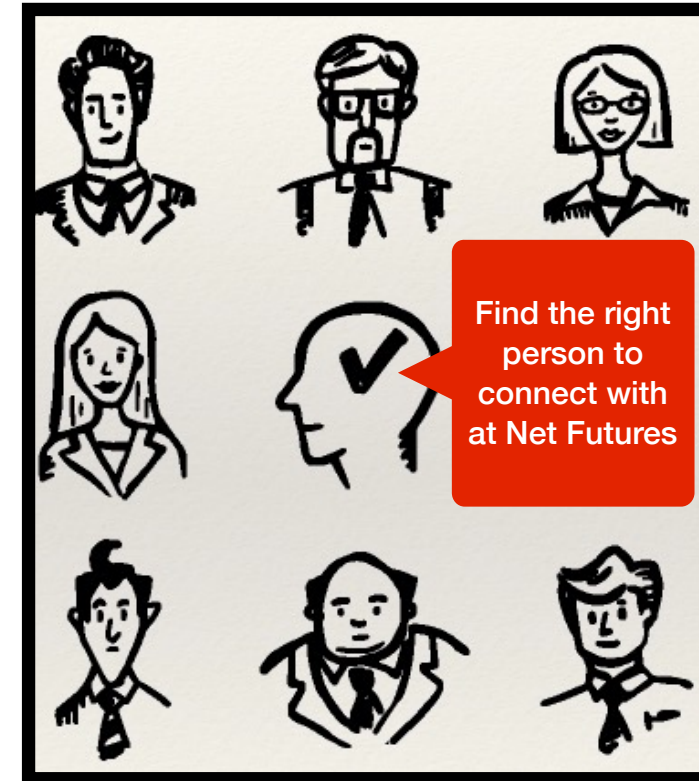
**Control** - puts you in control of your networking activity. Only connect and communicate with those that you want to.

**Unique Requirements** - allows you to search for attendees with unique skills or other requirements.

**Pre-conference** – you can start networking with other attendees before the conference even starts.

**Download now and start networking with other Net Futures delegates**

## Fuseami - the smarter networking app



**Driving Networking at Net Futures 2015.**

